



PowerStadium

テレビゲームに飽きたら、スタジアムへ行こう！
 ダイエットに挫折したら、スタジアムへ行こう！
 スタープレイヤーはパワー全開。熱狂したわたしはエネルギー源！
 参加型ゲーム発電所「パワースタジアム」で身も心もリフレッシュ。

nurueCompany

<http://nurue.com>

Thema : Energy

The Animal Conference on the Environment

Vol.04 nurue

Let's Create Energy Sources for the Future!

動物かんきょう会議

日本語版

FOR ENVIRONMENT

Animal conference



If humans won't do their part,
 then why not think as animals?

動物会議に参加しよう!

<http://zomama.jp>

Wasting energy.
 Is conservation the solution?

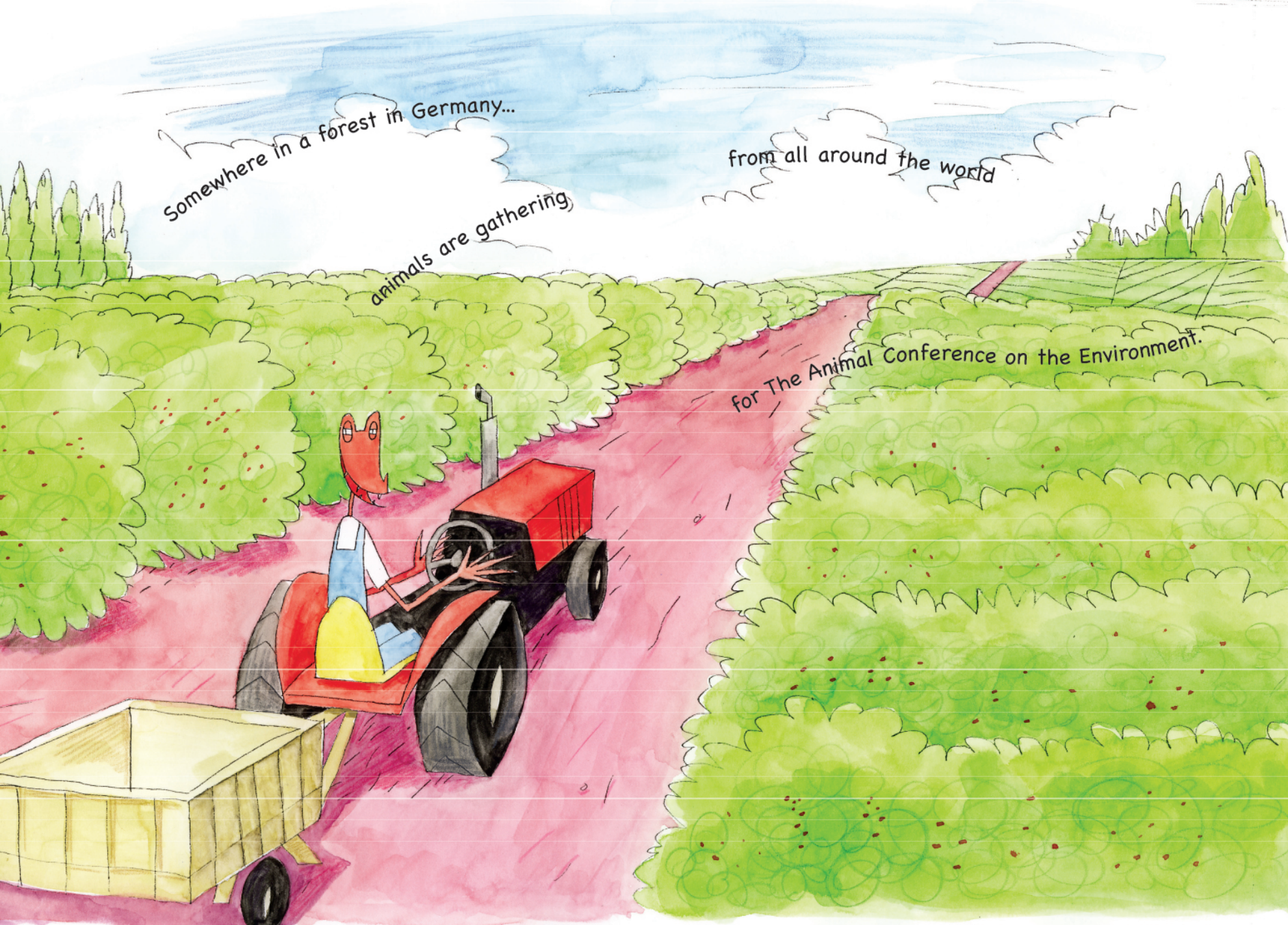
VOL.04

Somewhere in a forest in Germany...

from all around the world

animals are gathering

for The Animal Conference on the Environment.





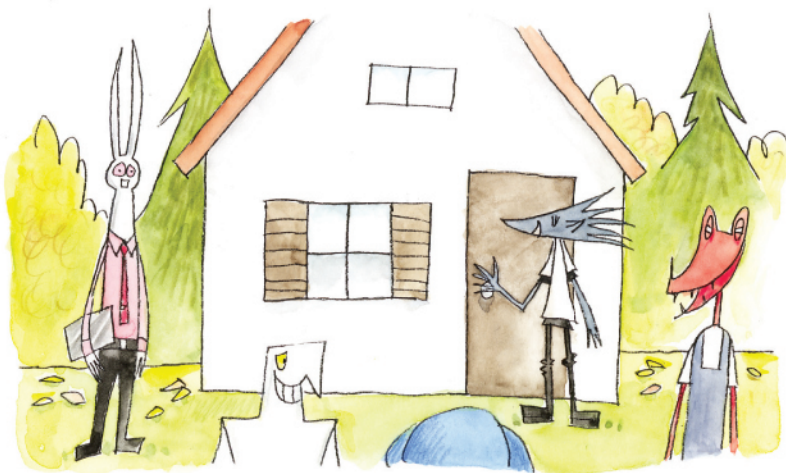
"Brrr, it's freezing!" Jacare cries out, shivering.

Leaves were falling from the forest trees as a cold wind came blowing from the north. "It's too c-c-cold for a m-m-meeting," Mama Elle complains, wrapping her long trunk around her neck for some warmth.



"You're right," Harri says, standing up. "Why don't we all go to my house, then? It's just around the corner." "Ah yes, a brilliant idea, Harri," says Dr. Rabbi, who seems delighted.

"Dare I say, a hot cup of afternoon tea would be lovely as well," he adds, wriggling his nose left and right.



And so it happened that all the animals marched along together to Harri's little house in the forest.

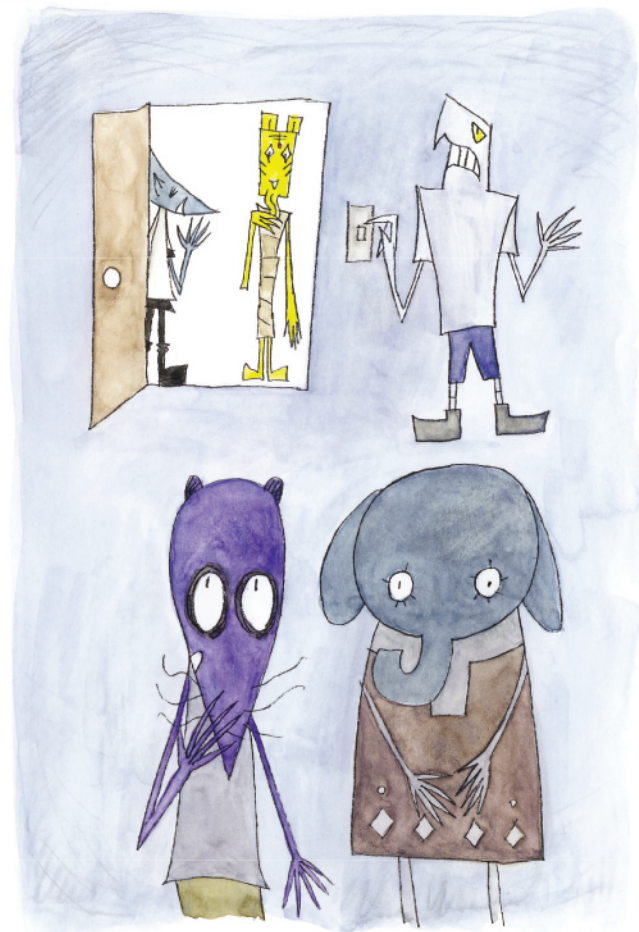
"Here we are everybody," says Harri, unlocking the door and inviting his friends inside. "Please come in."

The moment they enter the house however, Max peers up and down the hall. "Hey, why is it so dark in here?" he exclaims. "turn on some lights!"

He snaps the light switch but nothing happens.

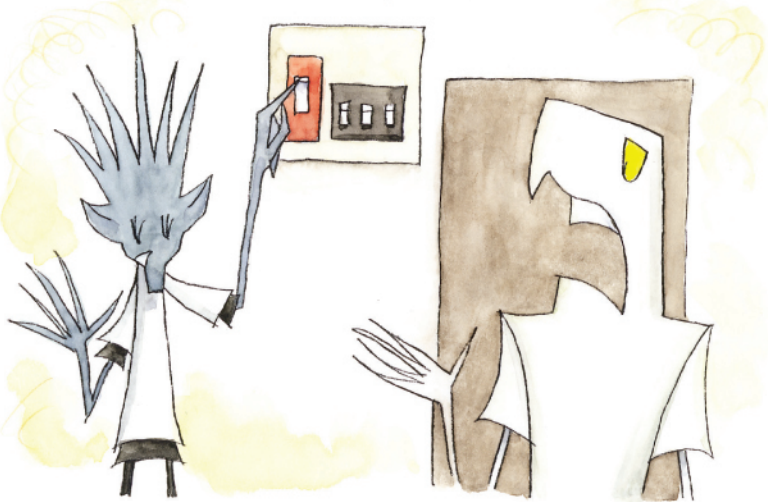
"Um, I think there's been a blackout. Nothing's happening."

Max continues flicking the switch up and down.



"Don't worry. There's no rush. First, the breaker..." Harri giggles as he switches it on.

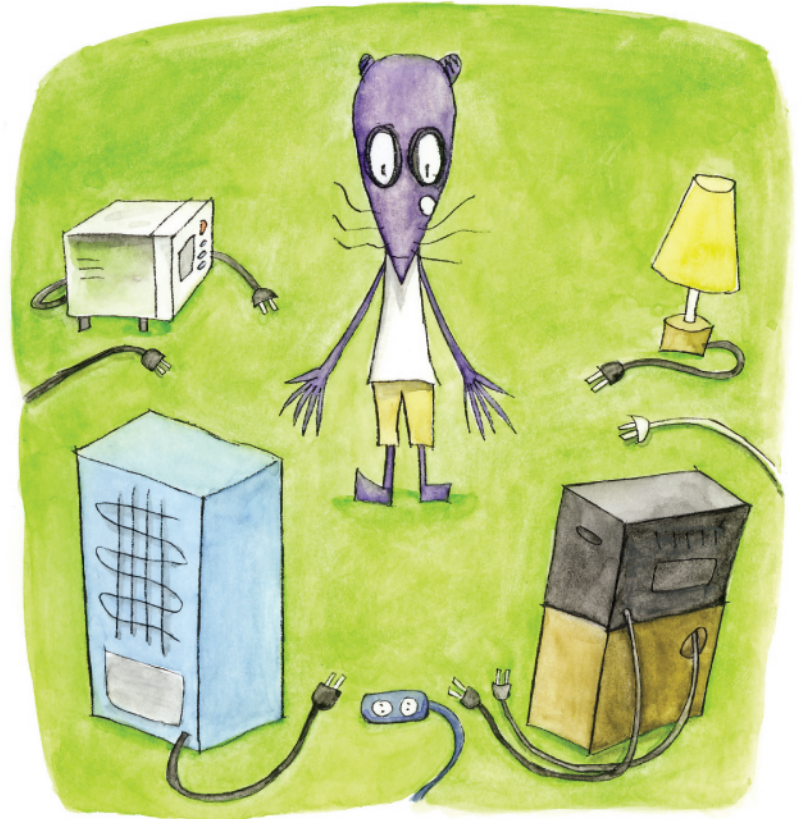
"What the—? You cut the breaker off? Why in the world would you do that?" cries Max with an expression of disbelief.



Without answering Max's question, Harri turns to Tak, who was just about to set his bottom down in a corner of the room. "Excuse me, Tak, but could you plug in the power cords over there?"

Tak looks around in surprise. All around the room, electrical cords lay scattered, out of their sockets.

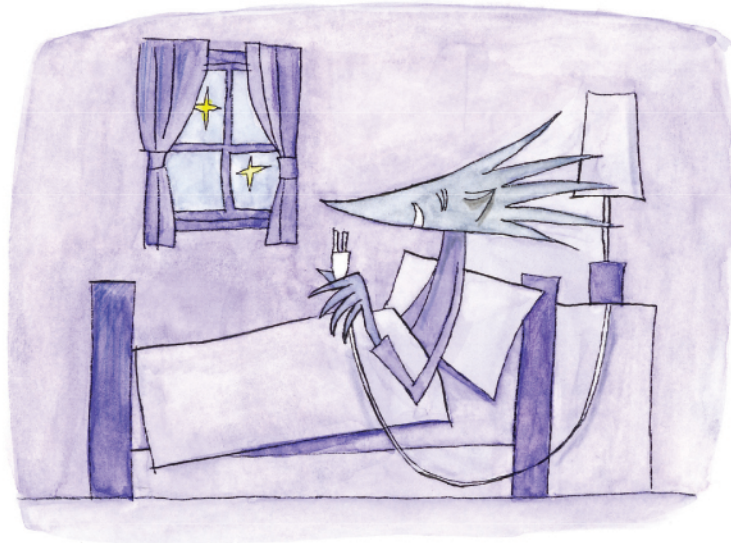
"Wow. The fridge, the TV... even the electric stove!"



"What's the surprise? I've been out for the day," Harri says without flinching, "Of course, I'm going to switch the breaker off."

Tak seems confused. "What do you mean 'of course'? I never turn the breaker off when I leave home."

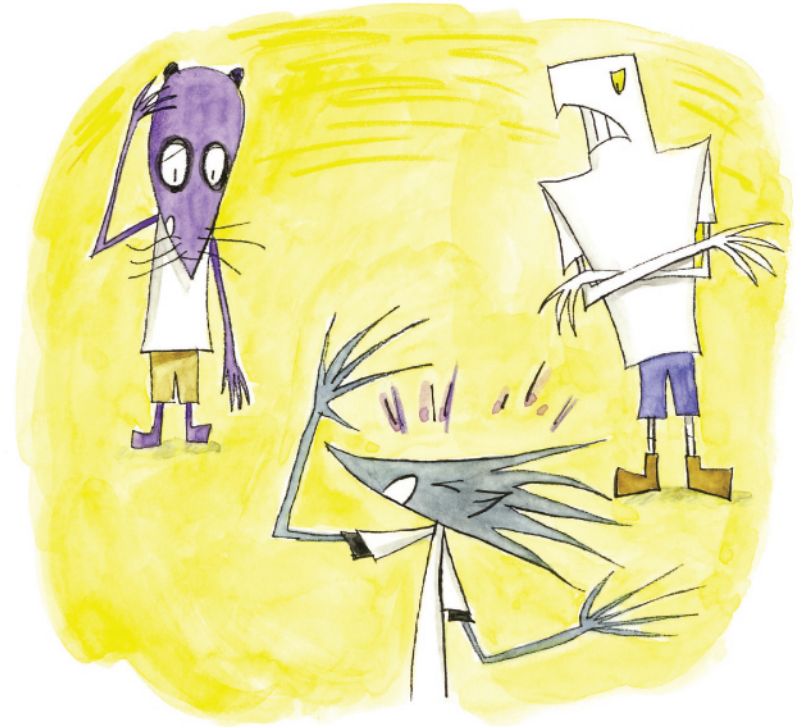
Now, it is Harri's turn to be surprised. "Really? I even take out all the plugs when I go to bed at night."



Max cocks his head, bewildered.

"Switching off your breaker, taking out the plugs? Hey, Harri! What's the big idea?"

"You animals don't know anything, do you?" Harri says, rolling his eyes.



"Ahem. Shall I explain, then?" Dr. Rabbi began lecturing in his usual academic manner. "When left plugged in, electrical appliances still continue to use up power whether the switches are on or off."

"Really? I never knew that!" Takku let out a gasp.

Max had never heard this either, but his reaction was rather cold.



"Who cares! Who'd want to go through all that trouble? Taking the plugs out from the walls everyday! Are you serious?"

At this point, Dr. Rabbi spread out a large sheet.

"Ahem. For your information, the energy consumed through switched-off electrical appliances still connected to a power source is called 'standby electricity' or 'vampire energy.' It comprises approximately 15% of all electricity consumed by the average household in any year."

"Oh, how wasteful..." the rest of the animals sighed in unison.

